

AW TRAILERS

Hydraulic Tailboards

There are two types of hydraulic tailboard available :-

Standard Hydraulic Tailboard



This is fitted with the arms running along the top of the trailer sides and the ram pushing up through the top of the sides. This gives a flush and neat fit but means that the tailboard cannot be used in conjunction with silages sides, extension sides or side to side roll-over sheets.

Contractor Hydraulic Tailboard



This is fitted with the arms on the outside of the trailer. This gives the trailer a slightly greater over all width but this tailboard can be used in conjunction with silage sides, extension sides and side to side roll-over sheets.

Standard Hydraulic Tailboard



The AW Standard Hydraulic Tailboard has lifting arms which are located along the top of the trailer body with the tailboard rams extending through the top of the trailer sides giving a neat, flush finish.

The tailboard arms are gusseted to the tailboard both horizontally and vertically for excellent strength and rigidity.



The bottom of the tailboard is held securely in place by 4 thick profiled lugs. The mechanism ensures that the deep bottom lip of the tailboard locates into these lugs. The tailboard has a large overlap down the rear cross member giving a good seal.

The rams and hoses are covered by a flush fitting panel.

AW Engineering (Hereford) Ltd.
Stoney Street
Madley
Hereford
HR2 9NQ

PLEASE TURN OVER FOR
CONTRACTOR HYDRAULIC
TAILBOARD DETAILS

Tel : 01981 251558
Fax : 01981 251568

Web : www.awtrailers.co.uk
Email : sales@awtrailers.co.uk

Contractor Hydraulic Tailboard

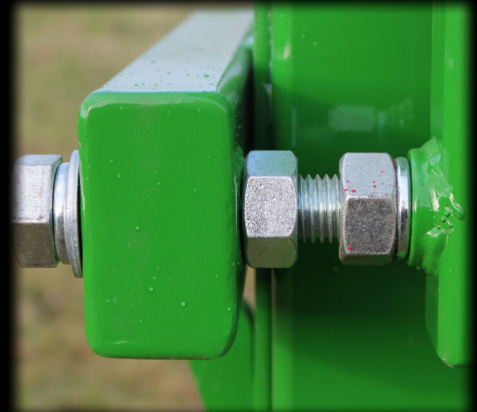
The AW Contractor Hydraulic Tailboard has lifting arms which are located on the outside of the trailer. This enables the tailboard to be easily used in conjunction with a variety of optional extras such as extension sides, silage sides and side to side roll-over sheets. This type of tailboard also gives a high clearance.



The tailboard mechanism incorporates a slotted profile which pivots on 45mm diameter chrome pins which can be easily greased. The slotted profile enables the tailboard to initially lift vertically out of the 4 profiled lugs welded onto the trailer rear cross member and then pivot to open fully.



The mounting of the tailboard ram base is kept to a minimum and is tapered and shaped to prevent snagging. The box section 'A' frame arms are set to as close to the bottom of the tailboard as possible for strength. The tailboard itself is fixed by 4 heavy duty fully adjustable bolts making adjustment simple and thereby enabling a good seal to be maintained.



The double acting hydraulic rams are fitted with hydraulic check valves to prevent 'creeping' of the rams during travelling and to ensure that the tailboard opens evenly. The combination of the check valves and the profiled lugs on the rear cross member maintains a good seal at all times.



The rams are chrome plated and fitted with rose joints at both ends.

AW Engineering (Hereford) Ltd.
Stoney Street
Madley
Hereford
HR2 9NQ

Tel : 01981 251558
Fax : 01981 251568

Web : www.awtrailers.co.uk
Email : sales@awtrailers.co.uk